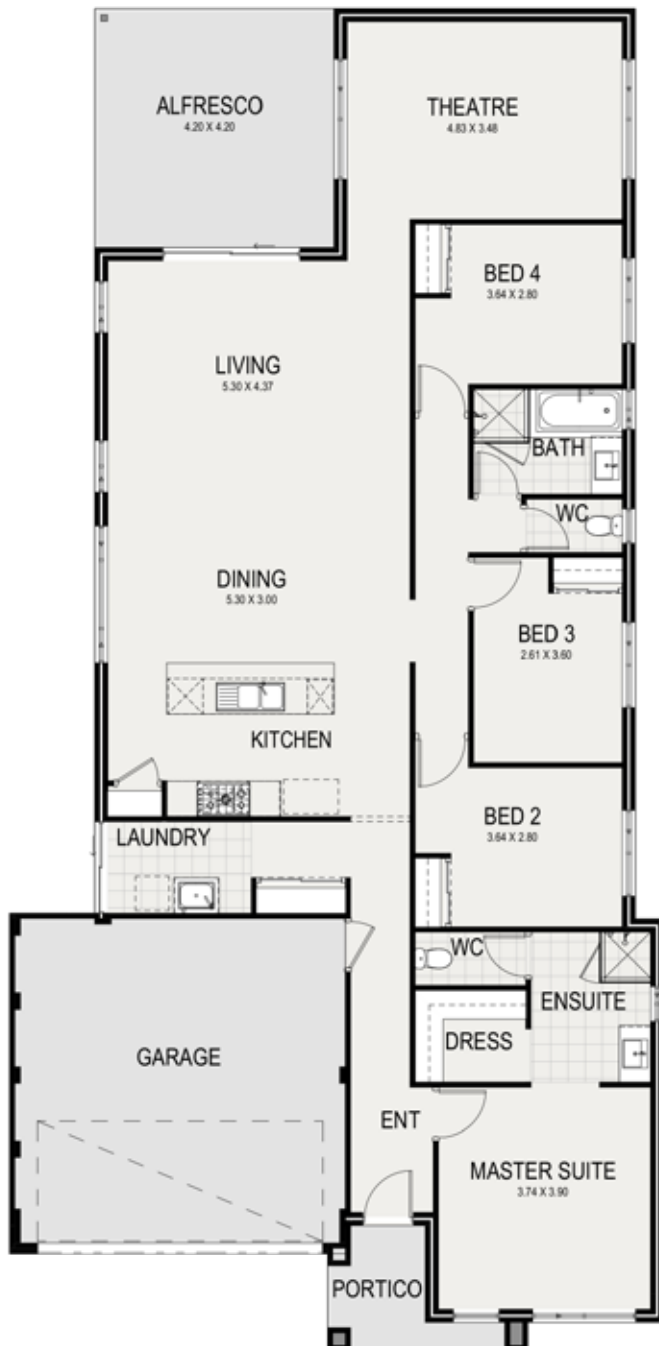




THE KODA



Ultra-modern and highly functional, The Koda is the perfect family home. A cleverly-designed master suite with large walk-in robe situated at the front of the home gives you privacy from the three minor bedrooms which are neatly tucked away to one side of the home. The fantastic kitchen, dining and living areas are the heart of this home with the addition of the theatre and alfresco providing extra entertainment space for all to enjoy.

SIGNATURE SPECIFICATION

SUITS 12.5M LOTS

TOTAL AREA 228.51M²

4 🚗 2 🛁 2 🚗



New Choice

HOMES

Image for illustration purposes only

24 SANGIORGIO COURT, OSBORNE PARK WA 6017 | T to 08 9201 7878