

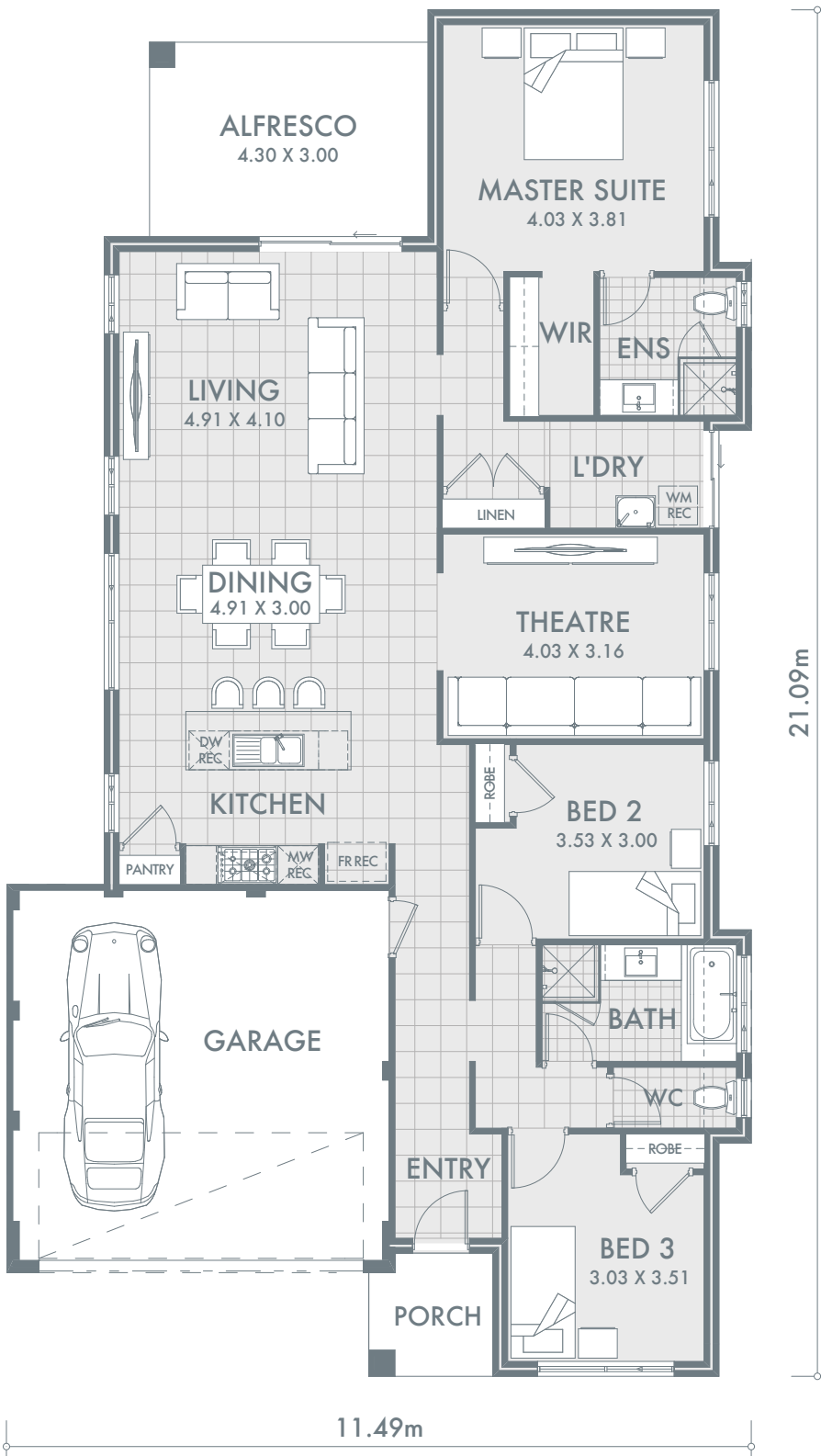


Pictures for illustration purposes only



THE SOUTHPORT

Designed for 12.5m wide blocks, the Southport is a 3 bedroom, 2 bathroom home design with everything you need in a spacious layout. The kitchen is located at the heart of the home and opens out to overlook the living and dining area. The master suite is located at the rear of the home with a spacious walk-in-robe and ensuite. This contemporary home design also boasts a comfortable theatre room and relaxing outdoor alfresco area.



LIVING AREAS

Indoor area	149.54m ²
Garage	34.97m ²
Alfresco	12.90m ²
Porch	3.52m ²
Total	200.93m ²

INCLUSIONS

- Floor tiling, carpets and venetian blinds throughout
- Two colour render to front elevation
- Choice of 1 x 900mm or twin 600mm ovens
- 900mm gas cook top and range hood
- 2m high semi frameless glass doors to showers
- White China basins to vanities
- Flick mixer tapware throughout
- Soft close cupboards and drawers
- 6 month maintenance period
- 25 year structural guarantee

FOR **12.5m**
WIDE LOTS