

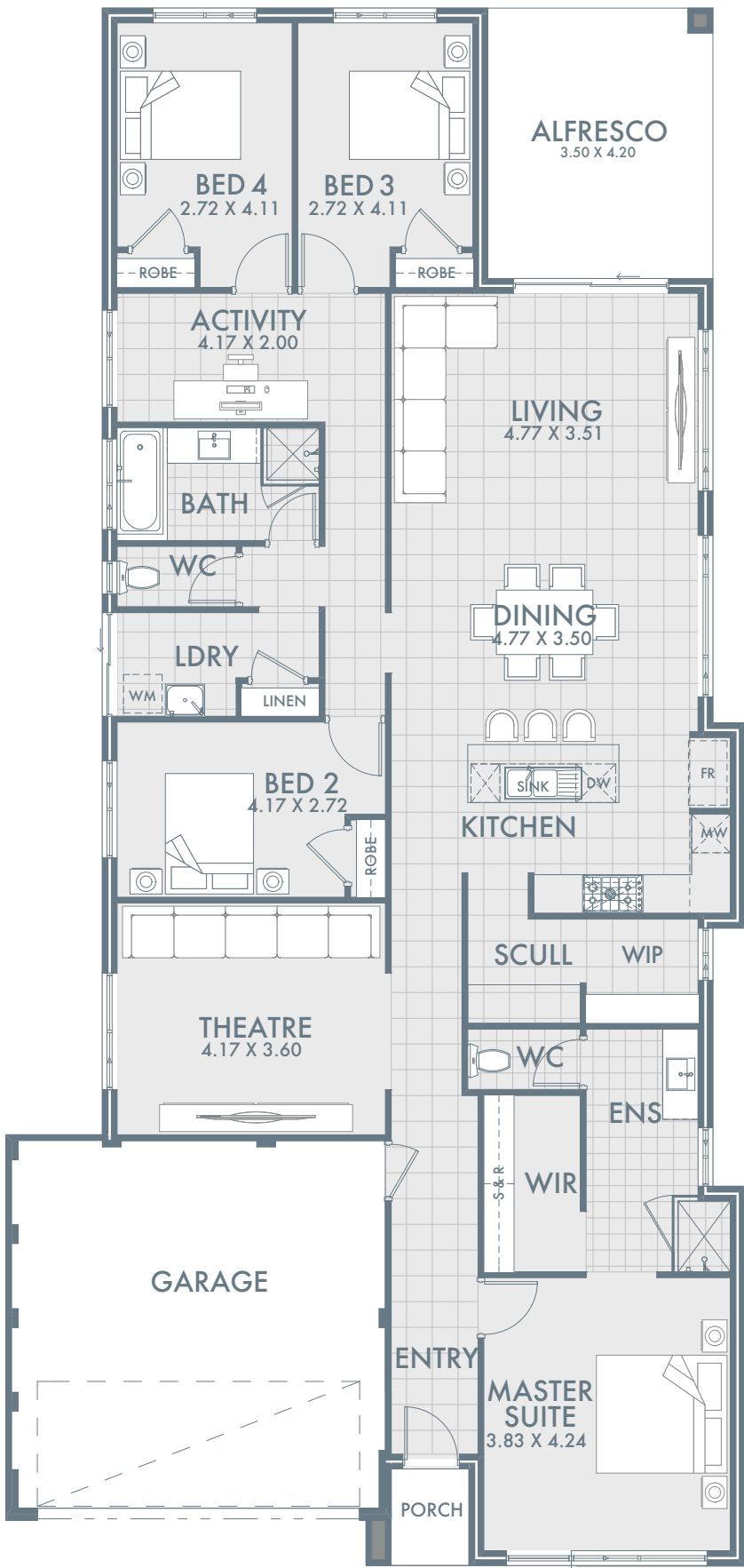


Pictures for illustration purposes only



THE SAVANNAH

The Savannah is a 4 bedroom, 2 bathroom home design with it all. The master suite is located at the front of the home, complete with a spacious walk in robe and ensuite. As you continue down the hallway there is a comfortable theatre room to your left and at the heart of the home is the kitchen with a handy scullery area. The open plan dining and living area flows onto the outdoor alfresco and adjacent from this are the minor bedrooms in their own wing including an activity space and shared bathroom.



LIVING AREAS

Indoor area	188.41m ²
Alfresco	14.70m ²
Garage	35.07m ²
Porch	2.09m ²
Total	240.27m ²

INCLUSIONS

- Floor tiling, carpets and venetian blinds throughout
- Two colour render to front elevation
- Choice of 1 x 900mm or twin 600mm ovens
- 900mm gas cook top and range hood
- 2m high semi frameless glass doors to showers
- White China basins to vanities
- Flick mixer tapware throughout
- Soft close cupboards and drawers
- 6 month maintenance period
- 25 year structural guarantee

FOR **12.5m**
 WIDE LOTS