

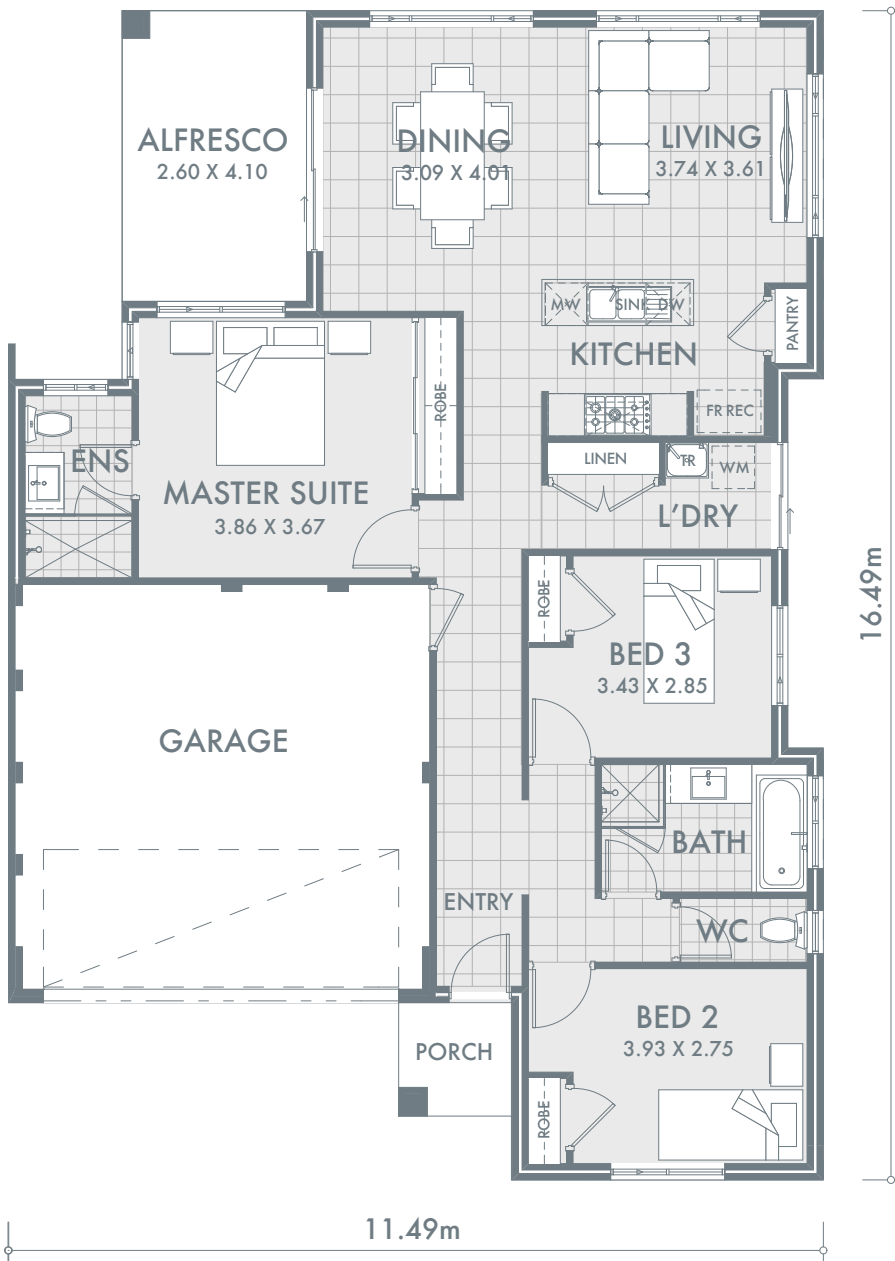


Pictures for illustration purposes only



THE SARINA

The 3 bedroom, 2-bathroom Sarina home design is exceptionally spacious. The beautifully sized master suite is complete with a built-in robe and ensuite. The kitchen is located in the centre of the home and includes a large island bench. Situated in their own wing at the front of the home are the two generous minor bedrooms each comprising of a built-in robe. At the rear of the home you will find the open plan living area that opens out on to the alfresco and combines indoor and outdoor living, perfect for entertaining family and friends.



LIVING AREAS

Indoor area	114.95m ²
Garage	35.05m ²
Alfresco	10.66m ²
Porch	2.54m ²
Total	163.20m²

INCLUSIONS

- Floor tiling, carpets and venetian blinds throughout
- Two colour render to front elevation
- Choice of 1 x 900mm or twin 600mm ovens
- 900mm gas cook top and range hood
- 2m high semi frameless glass doors to showers
- White China basins to vanities
- Flick mixer tapware throughout
- Soft close cupboards and drawers
- 6 month maintenance period
- 25 year structural guarantee

FOR **12.5m**

 WIDE LOTS