

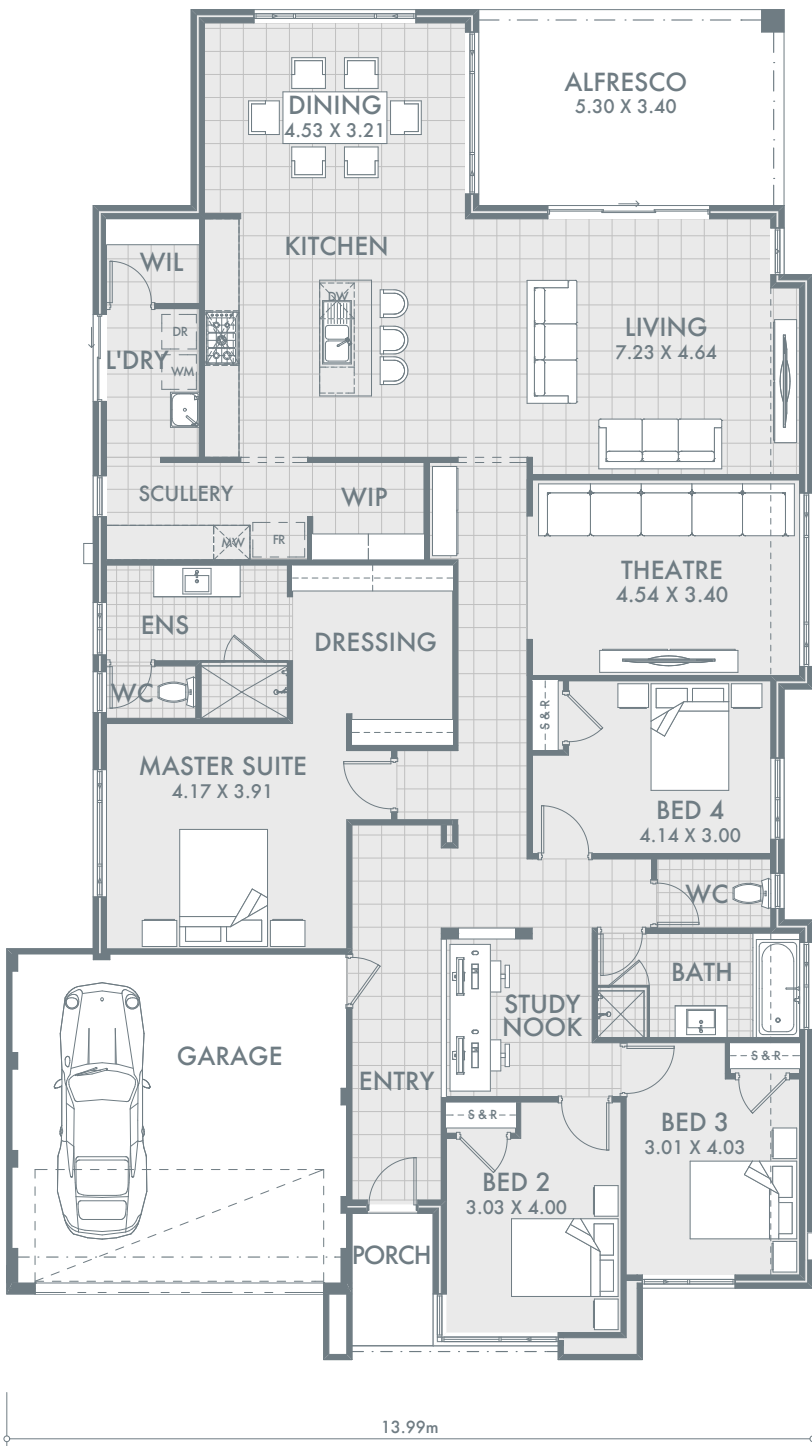


Pictures for illustration purposes only

The Monaco design is an exceptional home for families. The 3 minor bedrooms are located at the front of the home in their own wing surrounding a shared bathroom and handy study nook. The very luxurious master bedroom features an expansive walk in robe and ensuite. Towards the rear of the home, you will find the entertainment zone, boasting a home theatre and large living/dining area overlooking the generous sized alfresco area, perfect for entertaining friends and family. The kitchen is a chef's delight, encompassing a scullery.



THE MONACO



LIVING AREAS

Indoor area	225.56m ²
Alfresco	18.02m ²
Garage	35.07m ²
Porch	3.24m ²
Total	281.89m²

INCLUSIONS

- Floor tiling, carpets and venetian blinds throughout
- Two colour render to front elevation
- Choice of 1 x 900mm or twin 600mm ovens
- 900mm gas cook top and range hood
- 2m high semi frameless glass doors to showers
- White China basins to vanities
- Flick mixer tapware throughout
- Soft close cupboards and drawers
- 6 month maintenance period
- 25 year structural guarantee

FOR **15m**
WIDE LOTS