

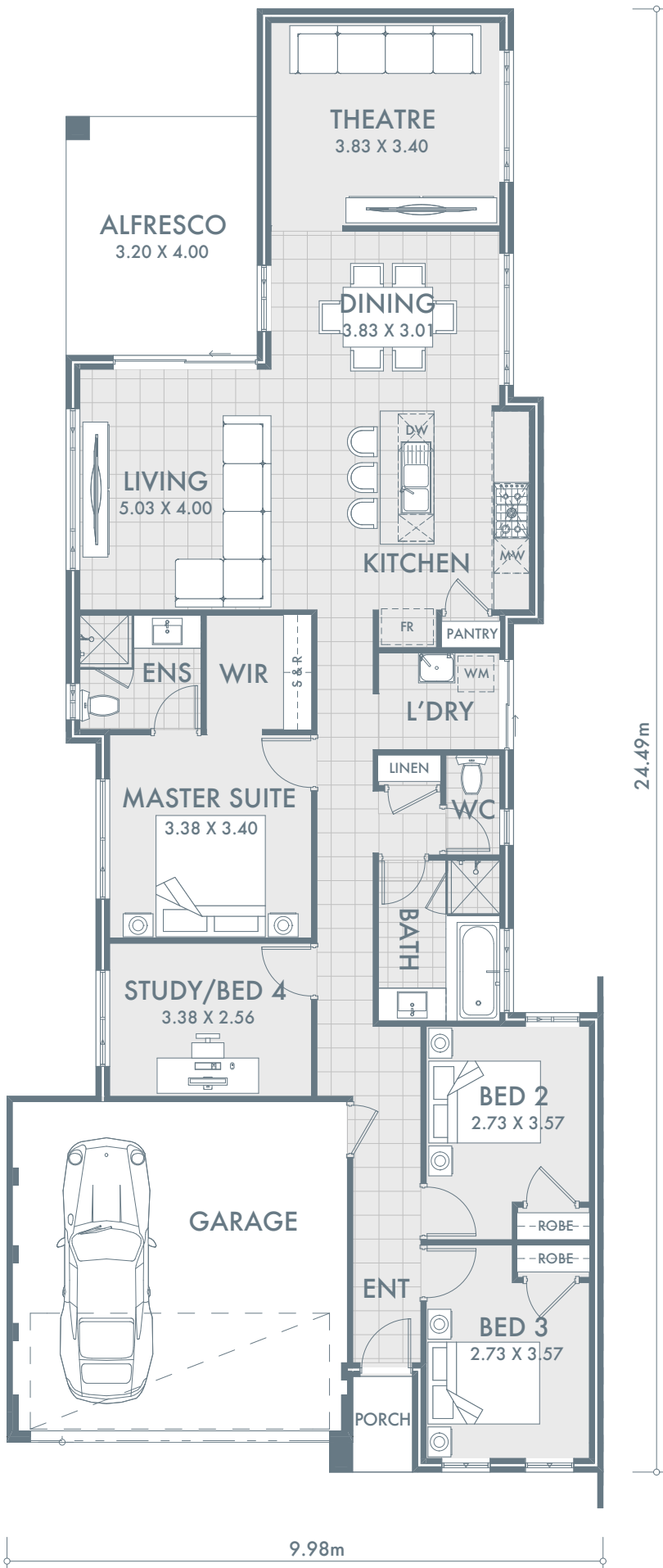


Pictures for illustration purposes only



THE CLAIRVIEW

The Clairview is a 4 bedroom, 2 bathroom home design that makes narrow lot living feel large. All minor bedrooms are located towards the front of the home with the master bedroom in the centre, complete with a spacious walk in robe and ensuite. The kitchen is situated at the heart of the home and includes a feature island bench top that looks onto the open plan living and dining areas. This space also flows directly through to the outdoor alfresco and the comfortable theatre that is located at the rear of the home.



LIVING AREAS

Indoor area	144.35m ²
Garage	32.72m ²
Alfresco	12.80m ²
Porch	1.79m ²
Total	191.66m²

INCLUSIONS

- Floor tiling, carpets and venetian blinds throughout
- Two colour render to front elevation
- Choice of 1 x 900mm or twin 600mm ovens
- 900mm gas cook top and range hood
- 2m high semi frameless glass doors to showers
- White China basins to vanities
- Flick mixer tapware throughout
- Soft close cupboards and drawers
- 6 month maintenance period
- 25 year structural guarantee

